



BUSINESS COMPETITIVE INTELLIGENCE
บริษัท บิสซิเนส ดอมเพ็ดทิฟ อินเทลลิเจนซ์ จำกัด

Q.Soft SCM

สุดยอดโปรแกรมที่นักบริหารเลือกใช้

 **ลด Dead Stock**

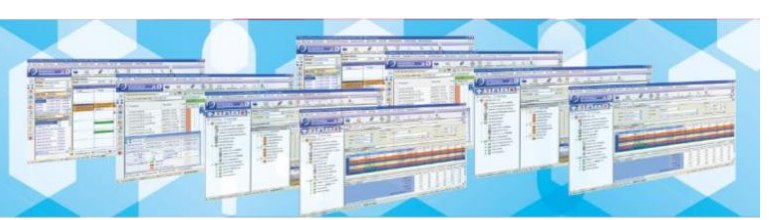
 **ประสิทธิภาพสูงสุด**

 **วางแผนการจัดซื้อล่วงหน้า**

 **ยืดหยุ่นในการเปลี่ยนแปลงแผนการจัดส่ง**



Tel : 0-2582-2110, 08-6321-3874, 08-6395-0364



Q.Soft SCM.

Supply Chain Management Solution for Manufacturing.

Q. Soft SCM is a program developed by a team of experienced analytics. and develop production management systems in various industrial sectors Combined with a team that has experience in developing Database Applications. We are committed to providing solutions to help solve production management problems for all types of industries. has selected the specific features suitable for various business types in order for our customers to get a solution that fits the specifics of their own company.

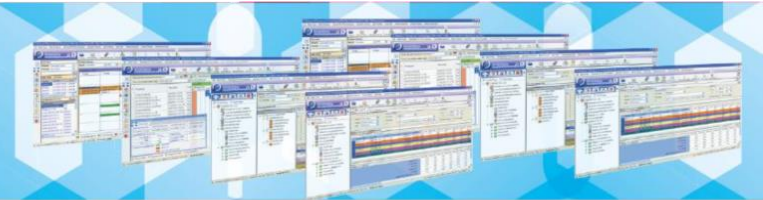




We adhere to the concept of “Just in Time, Zero Defect, Zero Stock” as the aim of this solution, which is to smooth the production throughout the customer's business value chain. to save And the most effective such as reducing Dead Stock to be as close to zero as possible in the part of finished goods - semi-finished goods - raw materials, calculations and flexibility in changing delivery plans when changing orders from customers. timely, advance purchasing planning with the following main features

Q. Soft SCM consists of the following main features:

- 1. Advanced Planning & Scheduling Module** is a simulation system that will occur in advance production planning to manage production plans and deliver goods on time or planning for production to reduce the amount of inventory to be lower or planning for select lower the production cost BOM. It supports made to order, made to stock, made to forecast production. It can handle hot orders with highest efficiency. (Can interrupt production plan when sale get hot order) and help determine the management of the shop floor, along with the Gantt Chart that can be modified improved the work plan at the Gantt Chart, making it easy to improve the production plan. You can also plan your order in advance by calculating Purchasing Lead Time, including outsource (OEM) planning with the date of needing (Pull) the product to the supplier and can also calculate time and quality with a resolution of up to 12 decimal places.
- 2. Material Requirement Planning Module**
Support stock management (raw material receipt, raw material picking to production, product receipt from production, production waste receipt, transfer of goods between warehouses, return of raw materials to suppliers, return of raw materials from production, return of goods from customers). Tracking production information (Backward Traceability and Forward Traceability). Stock management system (FIFO – Lot Specific) and can control products in Sub Lot or Serial No. Can create production lot from customer's lot or create lot no. for internal use.



3. Shop Floor Control

Dashboard to track and analyze the production situation with real time updating the job status Including the number of products that can be produced by scanning a barcode or QR Code, reducing the error of keying by hand. and convenient, fast, easy to operate.

4. Production Cost

Record and calculate the production cost including subsequent cost allocation resulting to be actual cost that comes from direct raw materials + direct labor + overhead (DM can give the program to calculate the Moving Average or FIFO or Lot Specific), (DL can calculate both labor per minute. or per piece), OH (unlimited allocation topics can be set)

5. Option Warehouse Management System

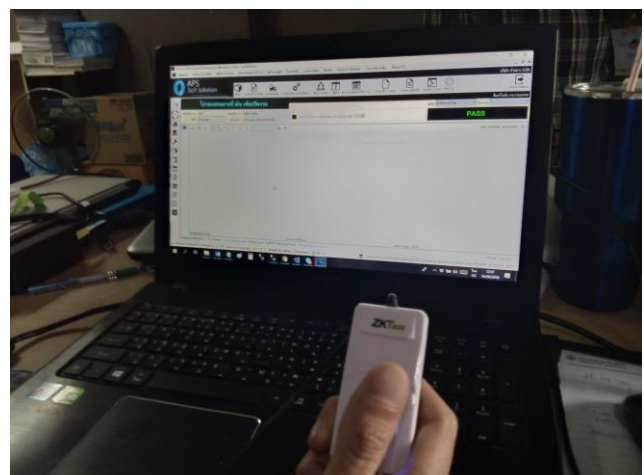
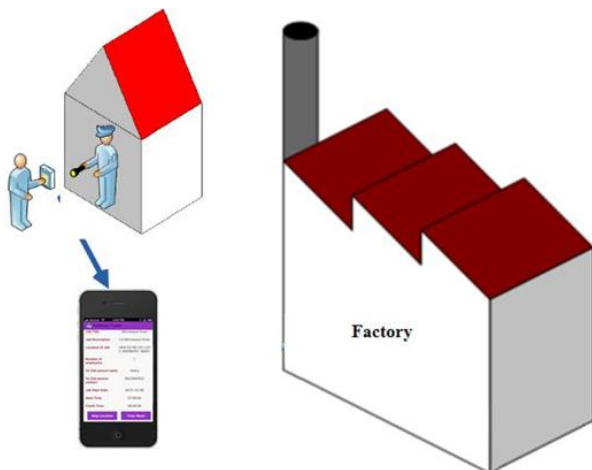
Supports product storage management at the location level and shelf level , pallet management, product tag issuance in the recycle Kanban.

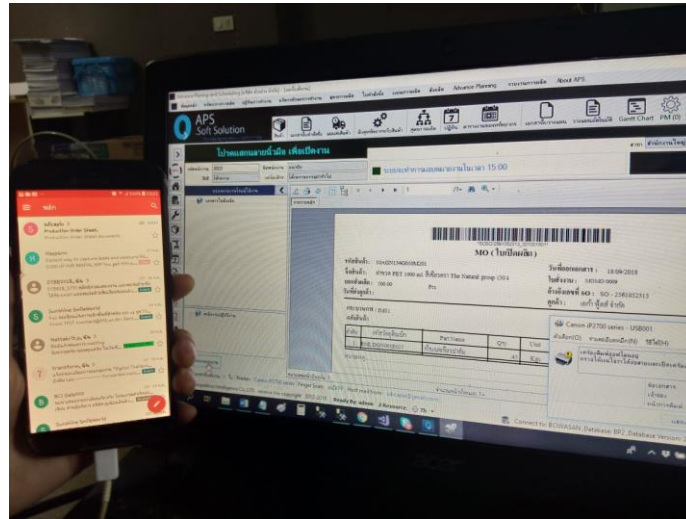
6. Option Quality Control System

Collect details of the test results of raw material properties, both products in the process of production. and finished production to issue NCR documents when receiving raw materials or Certificate of Analyst for products to be delivered to customers and the results of the inspection of the products returned by the customer.

6. Option Skill Matrix

System for dispatching work to staffs in the production lines with the method of placing from the level of ability to perform and when the employees actually work, the program will pay the works to the mobile phone or print the work sheets to the operators.





7. Option Sale Order (Web Application – Mobile Responsive)

Supports multi-level discounts, promotions, coupons, free gifts, requesting credit limit approval - temporarily increasing credit limit via LINE Notification

8. Plant Maintenance Module (Optional)

Support for preventive maintenance scheduling, notifying urgent repairs (Breakdown), opening repairs, managing spare parts and equipment by barcode, monitoring maintenance situations. and calculate maintenance costs. The maintenance plan, breakdown notification is linked to the Advanced Planning and Scheduling System (APS), allowing the production planning department to rescheduling in a timely manner.

9. Security and Authority system

Able to set rights to use (add, edit, delete, see, print) in every menu, can set permissions to separate documents. When the program calculates the request of consumption goods and raw materials, can separate the needs of each product for different books, configure visibility to all cost fields and keep log of all activities in program

10. Interface with Accounting System

There is a menu to exchange data with many leading accounting programs, such as through automatic central tables such as WINSpeed, API with Web Application or Export-Import Data by excel file that match many leading accounting software brands such as Formula.



Auxiliary system

9. Forest Management System

Support for the registration of forest plantations in private land Based on the detailed data format according to the Royal Forest Department according to the self-declaration of correctness and to be used as information for obtaining FSC, PEFC certificates

10. Point of Sale Module

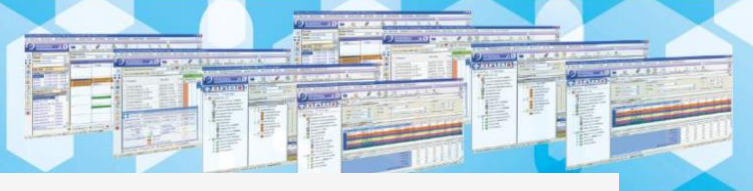
It is a point of sale system that can work both offline and online at the same time. Therefore, the problem of not being able to sell products when the internet disconnected will be eliminated and it is easy to manage the policy of managing multiple storefronts at the same time from a centralized location. Making promotions, coupons, freebies, there is a membership system and a GP calculator.

11. Business Intelligence Module

After using Q.Soft SCM, which customers will receive data in real time should be supplemented with Dashboard for viewing visualization reports via mobile phone or tablet, able to drill down the data, modify the format of the report itself.

Advantage in this Q.Soft SCM and options.

1. Can simulated production plan in many conditions.
2. Able to plan production both step by step (Separate planning – Job Shop) or planning the production of the whole product line or mix and match styles. Whether the productions are assembly line, flow manufacturing, discrete manufacturing. Whether it is an assembly production line or flow production, or discontinuous production Software can help with planning or even if the formula looks like an explosion. like a sawmill or planning to separate parts like a meat slaughterhouse.
3. Can insert urgent tasks Change the planned production plan. or even map out production order already with a format for insertion or change a variety of jobs Depending on the license to use the program that has been established.



4. There is a Gantt Chart that can edit the production plan at all, making it possible to view the work schedule. An easy overview and easy to modify plans.
5. Management can know the cost before production (depending on the license) and know the real cost after production make it easy to decide production management and convenient to help in the preparation of cost accounting
6. Support for production planning in Re-Process, Re-Work, Re-Pack and Accurately calculate the cost of products in that particular case
7. Support QC Process and issue Certificate such as (Certificate of Analyst or Non Conformance Report)
8. Support separates the work center production planning, even if the production depends on the manpower. (There is a change in manpower all the time)
9. Reduce redundancy increase the speed all of work purchasing warehousing, production planning and delivery and make it easy to find or track information along with the data for further processing.
10. Can be used in warehouse management to the right amount and reduce storage costs while knowing the movement of raw materials, semi-finished products Finished goods in warehouse
11. Able to check product costs in FIFO, Average and Lot Specific formats.
12. Increase the accuracy of the data and reduce errors in the work of employees by working through barcode scanning without having to use the keyboard to record data (depending on how to use design).
13. It is a tool to support information for production planning, purchasing, warehousing units to meet organizational policies.
14. Able to set permissions to use freely in every menu.
15. You can create your own work forms by extracting information from the structure of the system to use immediately.
16. Able to export data to MS Office files (.doc, .docx, .xls, .xlsx, .vsd, .mpp, .mppx, accdb, .rtf, .txt, .pdf, .xml) (depending on each report or menu)
17. สามารถตรวจสอบการทำงานของแต่ละผู้ใช้งานว่าอะไรไปบ้าง วันไหนและเวลาใด



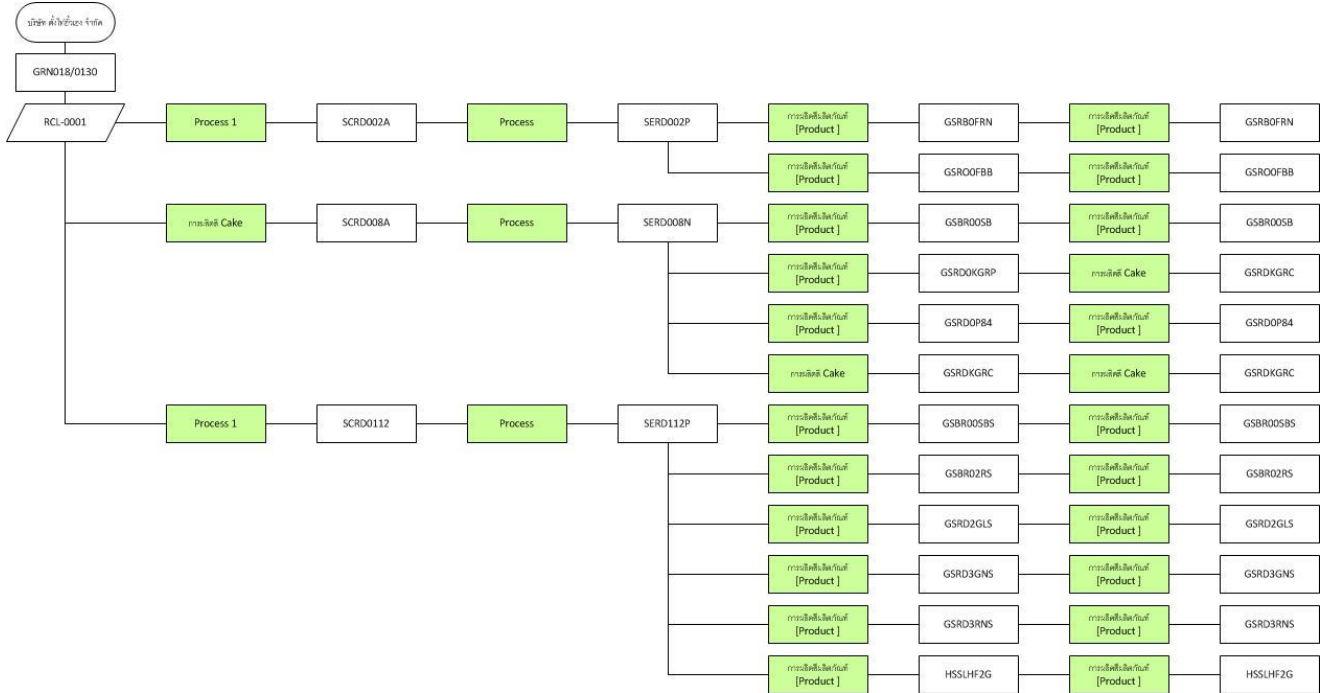
18. Support for Multi Company, Multi Branch, Multi Factory
19. Able to set unlimited multi-level bill of material.
20. 1 product working at the same time unlimited BOM, calculations with resolution up to 12 decimal places, revision BOM history can be stored.
20. A variety of resource utilization plans can be managed to simulate the production route that best suits the situation, such as on-time production, production by monitoring product costs, production by lowering inventory.
21. Support Thai – English Languages
22. Master Plan Scheduling Report
23. Master Productivity Report
24. Overall Equipment Effectiveness Report
25. Have an inventory management system (Receiving goods from purchase - returning raw materials to suppliers - withdrawing raw materials to produce - receiving goods from production - returning raw materials from production - transferring goods between warehouses - delivering products to customers - receiving returns from customers)
26. Program can track product history from backward traceability and forward traceability.
27. Support for product management in Sub Lot และ Serial No.
28. The program makes it possible to know the cost of products before production.
28. Can allocate DL and OH for production actual cost.
29. Can record scrap and waste quantity. Analyst cause of defection.
30. Able to view the summary of product inspection analysis results (QC)
30. Used to show the production situation for customers who frequently change product specification to know the progress in the production process for understanding between manufacturers and customers.
31. Know the gross profit from the sale of each product.
32. Can reserve products for sale and production that can separated on hand Stock, available stock in every product.
33. Able to summarize the total order amount for each customer.



34. There is a report comparing forecasts and actual sales of each customer, both compared with the price or compared with quantity.
35. The quotation can estimate the production cost from bill of material and add the margin for the convenience of the sale's quotation.
36. Multi-shift support, OT opening to increase production capacity
37. Preventive maintenance scheduled in advance on the specified date. (Fixed Date)
38. Set maintenance periods according to the specified number of days. (Period Scheduling)
39. Able to schedule downtime for resources, e.g., Machines, molds, equipment to link to the calculation of the production unit's work schedule. in the production planning system.
40. Able to open repair orders, close job, cancel job as appropriate.
41. Keep machines maintenance history.
42. Support for emergency repair notification.
42. Collect detailed performance data to use as a knowledge base for the next maintenance.
43. Summary of maintenance costs, separated by repair orders.

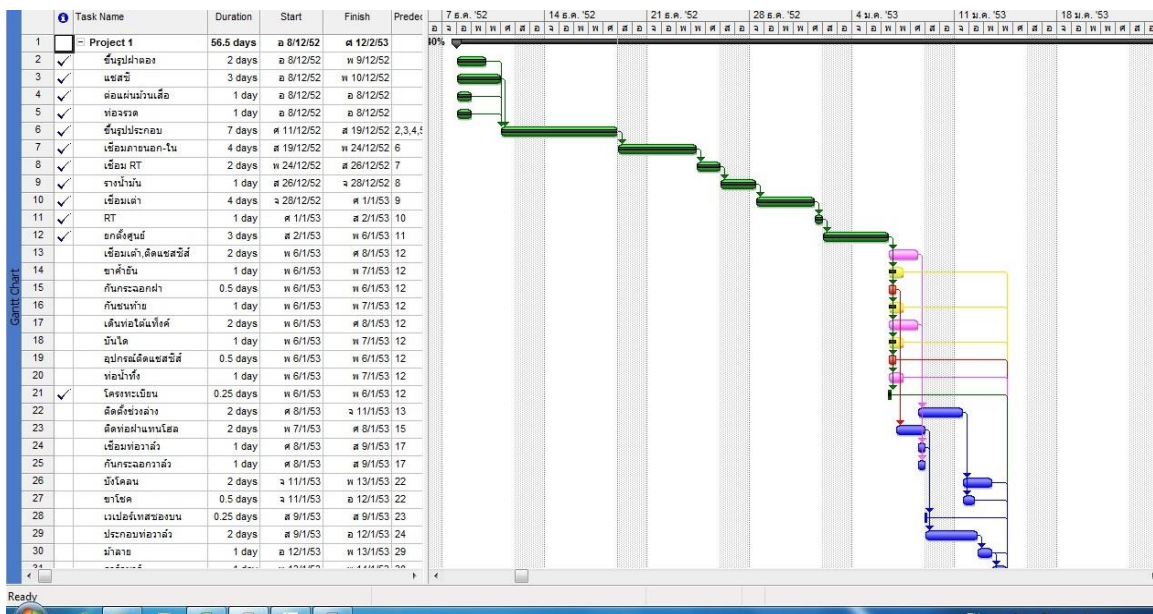


รายงาน Lot traceability



***** รับ Customize โปรแกรมทั้งในส่วนของ Input และรายงาน

- ตัวอย่างรายงานในโปรแกรม



Q.Soft SCM

BUSINESS COMPETITIVE INTELLIGENCE

บริษัท บิซิเนส คอมเพทิทีฟ อินเทลลิเจนซ์ จำกัด



Master Production Scheduling

วันที่ 12/2/2552

Product Code	Customer	Inv B/F	Group Mac	Machine	Cap	Total MPS	10/2/2552	11/2/2552	12/2/2552	13/2/2552	14/2/2552
CCCC	XXXXX	2000	MXD1	M001	2500	11300	2000	2500	2100	2200	2500
CCCC	YYYY	1000	MXD1	M010	1000	5000	1000	1000	1000	1000	1000
DDDD	XXXXX	2000	MXD1	M002	2000	9200	1900	2000	2000	1700	1600
AAAA	ZZZZ	500	MXD2	MC01	1200	6000	1200	1200	1200	1200	1200
				Onhand Stock			200	1400	2600	2600	2600
				Avialable Stock			0	500	900	200	0
				Safy Stock			100	100	100	100	100
				Re Order Point			50	50	50	50	50
				ยอดสินค้าที่ยังไม่เสร็จงานแผนจาก SO			4800	3600	2400	1200	0
				Out Of Stock ที่มีความต้องการสินค้าจาก SO			5800	4600	3400	2200	1000
				ยอดสินค้าที่ยังไม่เสร็จงานแผนจาก MTS			5000	5000	5000	5000	5000
				ยอดสินค้ารวมที่ยังไม่เสร็จงานแผน			9800	8600	7400	6200	5000
				ยอดผลิต (เสร็จ/ยอดรับ)			1200	1200	0	0	0